

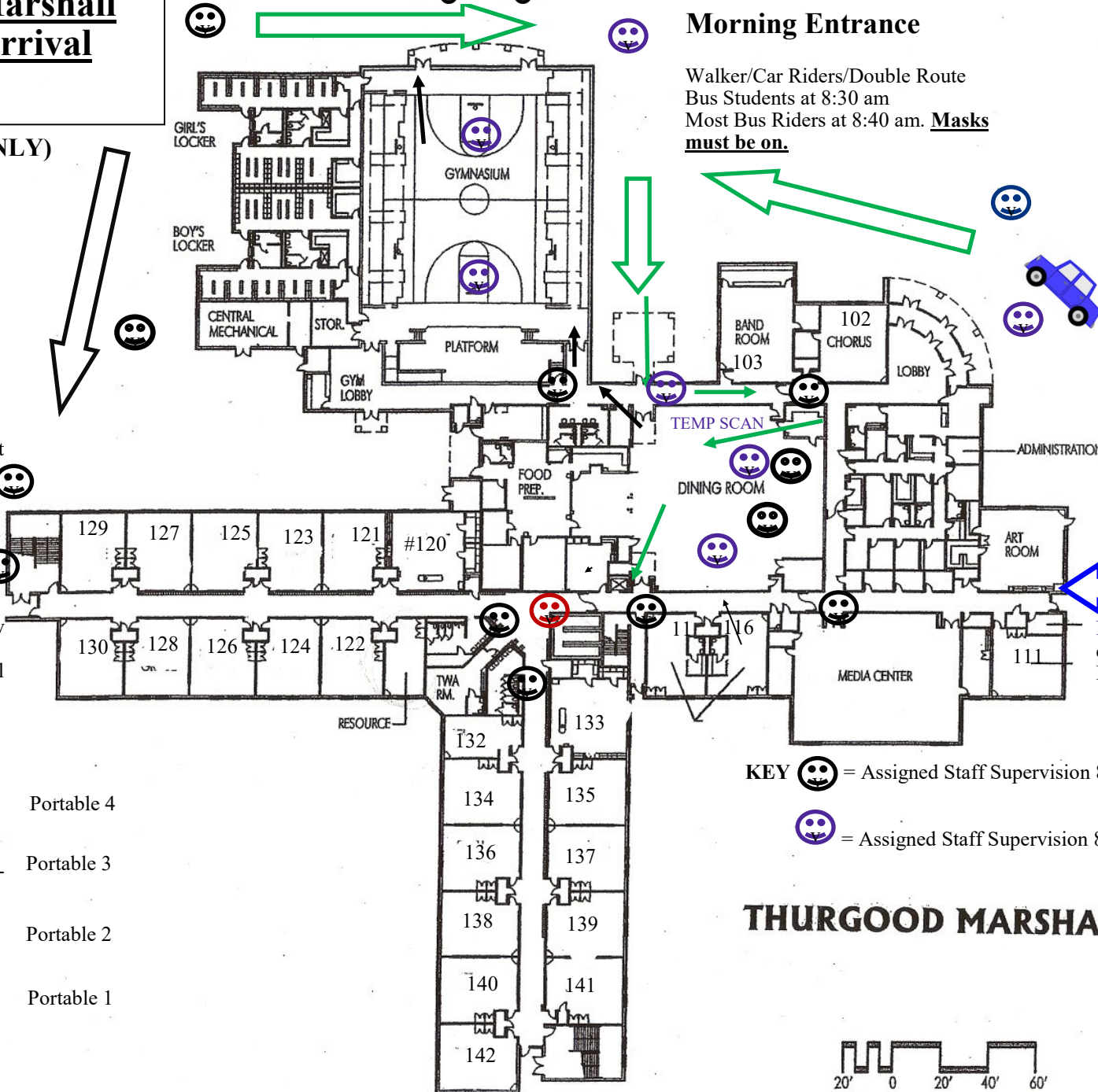
Thurgood Marshall Morning Arrival

Bus Drop Off Zone (ONLY)

Students on Busses with double routes, walkers, and car riders will enter by café @ 8:30 am, get temperature scanned in café (when installed), and either eat breakfast (sit every other seat) or wait in Gym until 8:40 am. All students waiting in gym (NOT eating breakfast & already temperature scanned in café prior to 8:40 am) will exit the gym and enter through exterior doors by 6th grade wing. Students should head directly to class (no lockers or restrooms).

Other Busses will hold students until 8:40 am and unload 1 bus at a time to allow safe spacing. At 8:40 am, ALL students will enter doors by cafeteria and get temperature scanned in café (when installed). Students can eat breakfast (sit every other seat) or head to class (no lockers). Students entering building after 8:40 am will exit café by stairs and head directly to class (no lockers or restrooms)

- Portable 4
- Portable 3
- Portable 2
- Portable 1



Morning Entrance

Walker/Car Riders/Double Route Bus Students at 8:30 am
Most Bus Riders at 8:40 am. **Masks must be on.**

Car Line

Parents you may begin drop off at 8:30 am
Please do not drop off before 8:30 am (no supervision)

KEY ☺ = Assigned Staff Supervision 8:40 am
☺ = Assigned Staff Supervision 8:30 am

FUN COMPANY entrance prior to 8:30 am. In room 111 & 102

THURGOOD MARSHALL MIDD

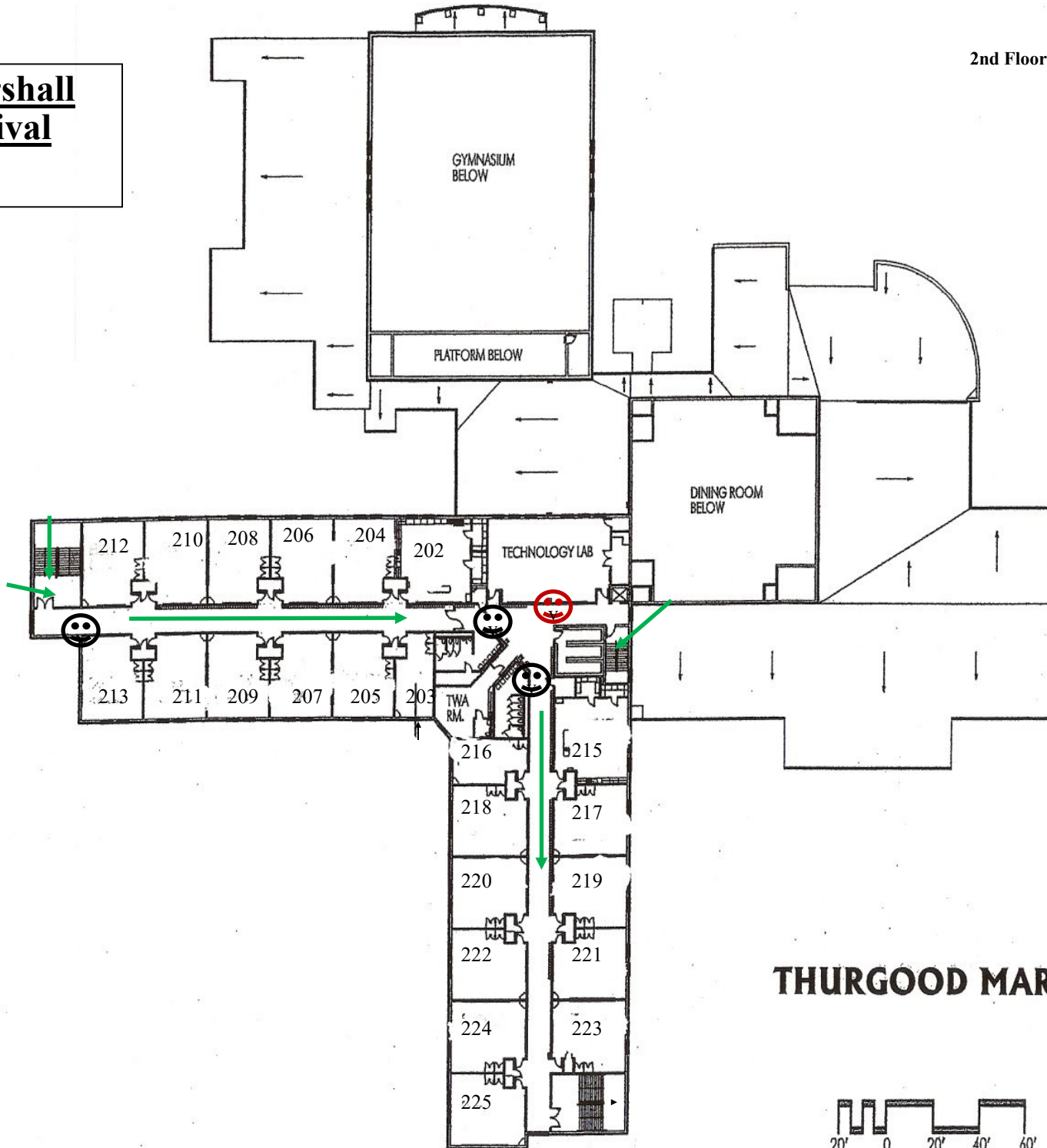


FIRST

Thurgood Marshall
Morning Arrival

**upstairs*

2nd Floor



THURGOOD MARSHALL MIDDLE

SECOND FLOOR

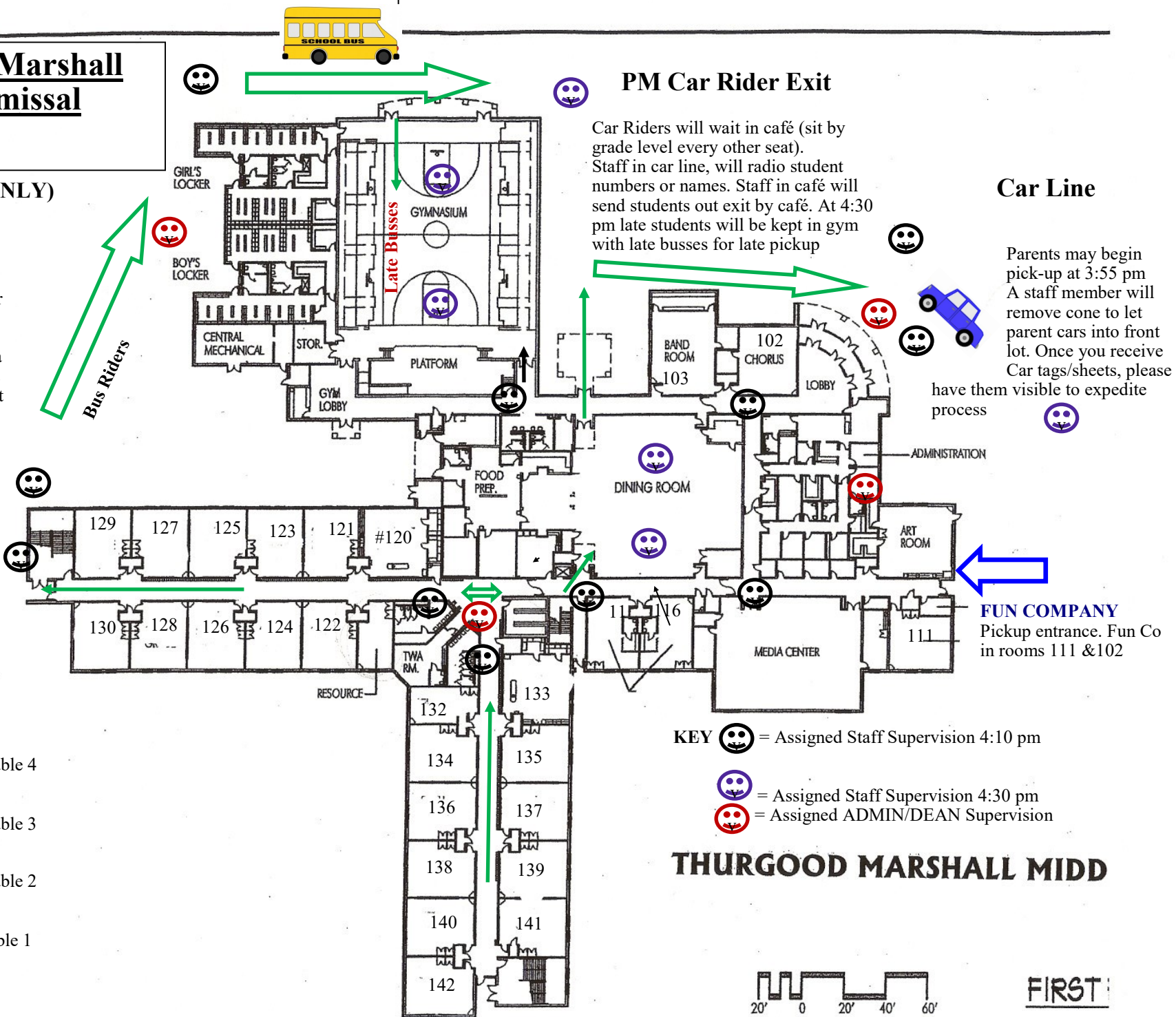
Thurgood Marshall PM Dismissal

Bus Pick-up Zone (ONLY)

5th/6th, then 7th/8th grade car riders/Fun Company called to café/Fun Co rooms @3:50 pm via PA or Dean/designee. Next, Deans/Designee will call one teacher's room at a time to walk remaining bus riders/walkers outside (start with 8th/6th then 5th/7th). The last period teachers should walk their students socially distanced wearing masks through the 6th grade wing exterior doors all the way through bus area into the gym where late busses will wait. Staff with PM car duties should report to their PM duties after walking students out.

Walkers

- Portable 4
- Portable 3
- Portable 2
- Portable 1



Car Riders will wait in café (sit by grade level every other seat). Staff in car line, will radio student numbers or names. Staff in café will send students out exit by café. At 4:30 pm late students will be kept in gym with late busses for late pickup

Car Line

Parents may begin pick-up at 3:55 pm. A staff member will remove cone to let parent cars into front lot. Once you receive Car tags/sheets, please have them visible to expedite process

- KEY**
- = Assigned Staff Supervision 4:10 pm
 - = Assigned Staff Supervision 4:30 pm
 - = Assigned ADMIN/DEAN Supervision

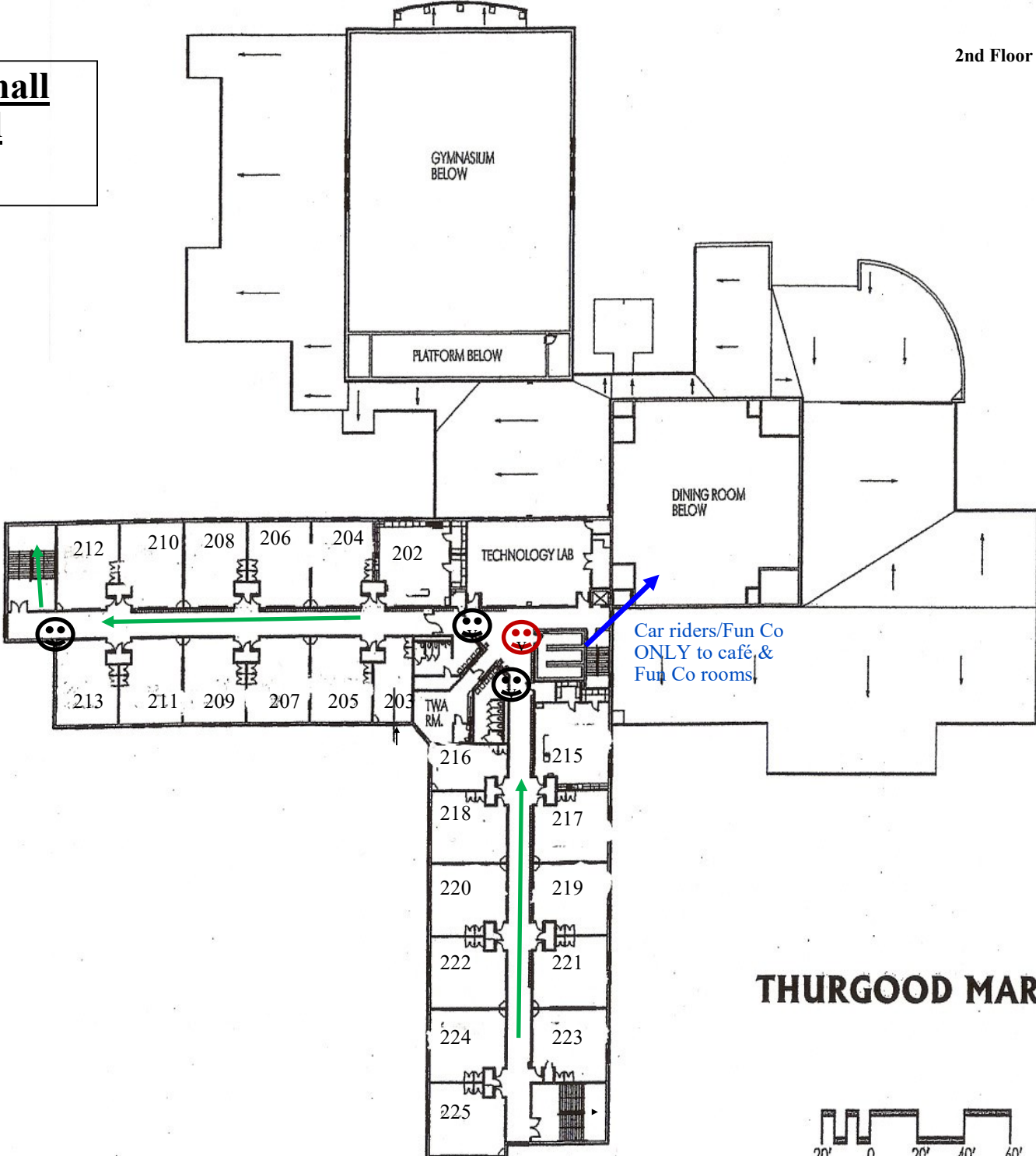
THURGOOD MARSHALL MIDD



FIRST

Thurgood Marshall
PM Dismissal
**upstairs*

2nd Floor



THURGOOD MARSHALL MIDDLE



SECOND FLOOR